

鑽
頭

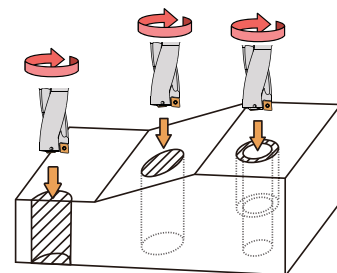
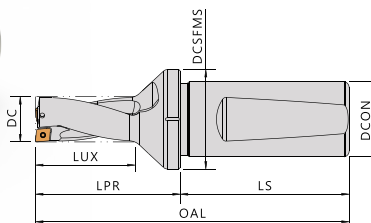
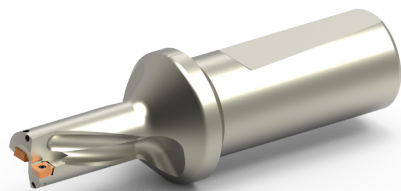
鑽
頭

Insert Type Indexable Drills



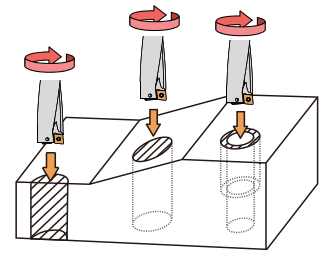
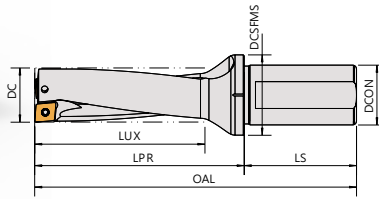
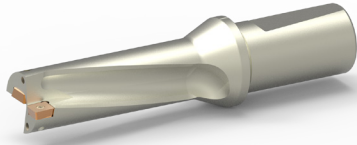
Since 1976





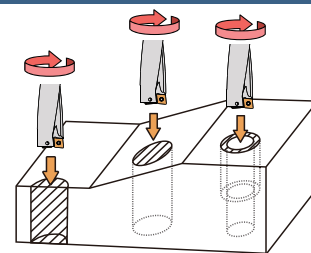
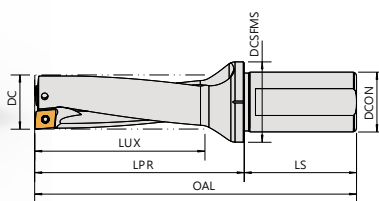
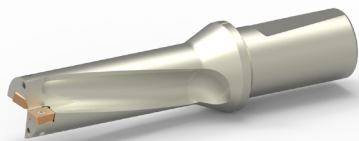
▼Recommended Inserts 刀片建議品牌: SUMITOMO

Order No.	Insert	Dimensions(mm)							Fig	Screw	Wrench	
		刀徑	柄徑	夾持接觸面直徑	最大鑽頭	總長	懸伸長度	柄長				
Right / Left		DC	DCON	DCSFMS	LUX	OAL	LPR	LS				
WDX130D2S20N	WDX130D2S20N	13.0	20	33	29	100	44	56	1	CS16045	FT-6	-
WDX155D2S20N	WDX155D2S20N	15.5			34	105	49					
WDX155D2S25N		15.5	34		105	49						
WDX160D2S25N		16.0	35		106	50						
WDX165D2S25N		16.5	36	107	51							
WDX170D2S25N	17.0	37	108	52								
WDX175D2S25N	17.5	32	38	109	53							
WDX180D2S25N	18.0		39	110	54							
WDX240D2S25N	WDX240D2S25N	24.0	37	51	125	69	CS25055 / CS25052S			-	DT-8	
WDX245D2S25N		24.5		52	126	70						
WDX250D2S25N		25.0		53	127	71						



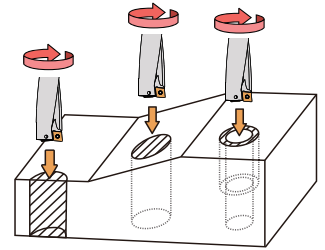
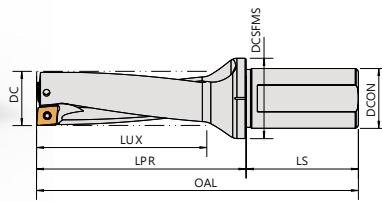
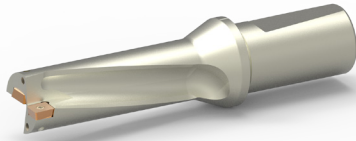
▼Recommended Inserts 刀片建議品牌: SUMITOMO

Order No.	Insert	Dimensions(mm)							Fig	Screw	Wrench			
		刀徑	柄徑	夾持接觸面直徑	最大鑽頭	總長	懸伸長度	柄長						
Right / Left		DC	DCON	DCSFMS	LUX	OAL	LPR	LS						
WDX130D3S20N	WDXT042004	13.0	20	28	42.0	101.0	57.0	44	1	CS16045	FT-6	-		
WDX135D3S20N		13.5			43.5	102.5	58.5							
WDX140D3S20N		14.0			45.0	104.0	60.0							
WDX145D3S20N		14.5			46.5	105.5	61.5							
WDX150D3S20N		15.0			48.0	107.0	63.0							
WDX155D3S20N	WDXT052504	15.5	20	28	49.5	108.5	64.5	44		1	CS20047	FT-6	-	
WDX160D3S20N		16.0			51.0	110.0	66.0							
WDX165D3S20N		16.5			52.5	111.5	67.5							
WDX170D3S20N		17.0			54.0	113.0	69.0							
WDX175D3S25N	WDXT063006	17.5	25	33	55.5	126.5	70.5	56			1	CS22060	-	DT-7
WDX180D3S25N		18.0			57.0	128.0	72.0							
WDX185D3S25N	WDXT073506	18.5	25	33	58.5	129.5	73.5	56		2		CS25055/ CS25052S	-	DT-8
WDX190D3S25N		19.0			60.0	131.0	75.0							
WDX195D3S25N		19.5			61.5	132.5	76.5							
WDX200D3S25N		20.0			63.0	134.0	78.0							
WDX205D3S25N		20.5			64.5	135.5	79.5							
WDX210D3S25N		21.0			66.0	137.0	81.0							
WDX215D3S25N		21.5			67.5	138.5	82.5							
WDX220D3S25N		22.0			69.0	140.0	84.0							
WDX225D3S25N		22.5			70.5	141.5	85.5							
WDX230D3S25N	WDXT094008	23.0	25	33	72.0	146.0	90.5	56	2			CS35095	-	DBIT-T15
WDX235D3S25N		23.5			73.5	147.5	91.5							
WDX240D3S25N		24.0			75.0	149.0	93.0							
WDX245D3S25N		24.5			76.5	150.5	94.5							
WDX250D3S25N		25.0			78.0	152.0	96.0							
WDX255D3S32N	WDXT094008	25.5	32	41	79.5	159.5	99.5	60			2	CS35095	-	DBIT-T15
WDX260D3S32N		26.0			81.0	161.0	101.0							
WDX265D3S32N		26.5			82.5	162.5	102.5							
WDX270D3S32N		27.0			84.0	164.0	104.0							
WDX275D3S32N		27.5			85.5	165.5	105.5							
WDX280D3S32N	WDXT125012	28.0	40	54	87.0	167.0	107.0	70		2		CS50100	-	DBIT-T20
WDX285D3S32N		28.5			88.5	168.5	108.5							
WDX290D3S32N		29.0			91.0	172.0	112.0							
WDX295D3S32N		29.5			92.5	173.5	113.5							
WDX300D3S32N		30.0			94.0	178.0	118.0							
WDX310D3S32N	WDXT125012	31.0	40	54	97.0	181.0	121.0	70	2			CS50100	-	DBIT-T20
WDX320D3S32N		32.0			100.0	184.0	124.0							
WDX330D3S40N		33.0			103.0	197.0	127.0							
WDX340D3S40N		34.0			106.0	200.0	130.0							
WDX350D3S40N		35.0			109.0	203.0	133.0							
WDX360D3S40N	WDXT125012	36.0	40	54	112.0	206.0	136.0	70			2	CS50100	-	DBIT-T20
WDX370D3S40N		37.0			116.0	216.0	146.0							
WDX380D3S40N		38.0			119.0	219.0	149.0							
WDX390D3S40N		39.0			122.0	222.0	152.0							
WDX400D3S40N		40.0			125.0	225.0	155.0							
WDX410D3S40N	WDXT125012	41.0	40	54	128.0	228.0	158.0	70		2		CS50100	-	DBIT-T20
WDX420D3S40N		42.0			131.0	231.0	161.0							
WDX430D3S40N		43.0			134.0	234.0	164.0							
WDX440D3S40N		44.0			137.0	237.0	167.0							
WDX450D3S40N		45.0			140.0	240.0	170.0							



▼Recommended Inserts 刀片建議品牌: SUMITOMO

Order No.	Insert	Dimensions(mm)							Fig	Screw	Wrench	
		刀徑	柄徑	夾持接觸面直徑	最大鑽頭	總長	懸伸長度	柄長				
Right / Left		DC	DCON	DCSFMS	LUX	OAL	LPR	LS				
WDX130D4S20N	WDX042004	13.0	20	28	55	114	70	44	1	CS16045	FT-6	-
WDX135D4S20N		13.5			57	116	72					
WDX140D4S20N		14.0			59	118	74					
WDX145D4S20N		14.5			61	120	76					
WDX150D4S20N		15.0			63	122	78					
WDX155D4S20N	WDX052504	15.5	20	28	65	124	80	44				
WDX160D4S20N		16.0			67	126	82					
WDX165D4S20N		16.5			69	128	84					
WDX170D4S20N		17.0			71	130	86					
WDX175D4S25N	WDX063006	17.5	25	33	73	144	88	56				
WDX180D4S25N		18.0			75	146	90					
WDX185D4S25N	WDX063006	18.5	25	33	77	148	92	56				
WDX190D4S25N		19.0			79	150	94					
WDX195D4S25N		19.5			81	152	96					
WDX200D4S25N		20.0			83	154	98					
WDX205D4S25N		20.5			85	156	100					
WDX210D4S25N		21.0			87	158	102					
WDX215D4S25N		21.5			89	160	104					
WDX220D4S25N		22.0			91	162	106					
WDX225D4S25N	22.5	93	164	108								
WDX230D4S25N	WDX073506	23.0	25	33	95	169	113	56				
WDX235D4S25N		23.5			97	171	115					
WDX240D4S25N		24.0			99	173	117					
WDX245D4S25N		24.5			101	175	119					
WDX250D4S25N		25.0	103	177	121							
WDX255D4S32N		32	41	105	185	125	60					
WDX260D4S32N				107	187	127						
WDX265D4S32N				109	189	129						
WDX270D4S32N				111	191	131						
WDX275D4S32N				113	193	133						
WDX280D4S32N	115			195	135							
WDX285D4S32N	117	197	137									
WDX290D4S32N	WDX094008	29.0	32	41	120	201	141	60				
WDX295D4S32N		29.5			122	203	143					
WDX300D4S32N		30.0			124	208	148					
WDX310D4S32N		31.0			128	212	152					
WDX320D4S32N		40	54	132	216	156	70					
WDX330D4S40N				136	230	160						
WDX340D4S40N				140	234	164						
WDX350D4S40N				144	238	168						
WDX360D4S40N	148	242	172									
WDX370D4S40N	WDX125012	40	54	153	253	183	70					
WDX380D4S40N				157	257	187						
WDX390D4S40N				161	261	191						
WDX400D4S40N				165	265	195						
WDX410D4S40N				169	269	199						
WDX420D4S40N				173	273	203						
WDX430D4S40N				177	277	207						
WDX440D4S40N				181	281	211						
WDX450D4S40N	185	285	215									



▼ Recommended Inserts 刀片建議品牌: SUMITOMO

Order No.	Insert	Dimensions(mm)							Fig	Screw	Wrench	
		刀徑	柄徑	夾持接觸面直徑	最大鑽頭	總長	懸伸長度	柄長				
Right / Left		DC	DCON	DCSFMS	LUX	OAL	LPR	LS				
WDX130D5S20N	WDX042004	13.0	20	28	68.0	127.0	83.0	44	1	CS16045	FT-6	-
WDX135D5S20N		13.5			70.5	129.5	85.5					
WDX140D5S20N		14.0			73.0	132.0	88.0					
WDX145D5S20N		14.5			75.5	134.5	90.5					
WDX150D5S20N		15.0			78.0	137.0	93.0					
WDX155D5S20N	WDX052504	15.5	20	28	80.5	139.5	95.5	44		CS20047	FT-6	-
WDX160D5S20N		16.0			83.0	142.0	98.0					
WDX165D5S20N		16.5			85.5	144.5	100.5					
WDX170D5S20N		17.0			88.0	147.0	103.0					
WDX175D5S25N	WDX063006	17.5	25	33	90.5	161.5	105.5	56		CS22060	-	DT-7
WDX180D5S25N		18.0			93.0	164.0	108.0					
WDX185D5S25N	WDX073506	18.5	25	33	95.5	166.5	110.5	56		CS25055/ CS25052S	-	DT-8
WDX190D5S25N		19.0			98.0	169.0	113.0					
WDX195D5S25N		19.5			100.5	171.5	115.5					
WDX200D5S25N		20.0			103.0	174.0	118.0					
WDX205D5S25N		20.5			105.5	176.5	120.5					
WDX210D5S25N		21.0			108.0	179.0	123.0					
WDX215D5S25N		21.5			110.5	181.5	125.5					
WDX220D5S25N		22.0			113.0	184.0	128.0					
WDX225D5S25N	WDX094008	22.5	25	33	115.5	186.5	130.5	60	CS35095	-	DBIT-T15	
WDX230D5S25N		23.0			118.0	192.0	136.0					
WDX235D5S25N		23.5			120.5	194.5	138.5					
WDX240D5S25N		24.0			123.0	197.0	141.0					
WDX245D5S25N	WDX125012	24.5	32	41	125.5	199.5	143.5	70	CS50100	-	DBIT-T20	
WDX250D5S25N		25.0			128.0	202.0	146.0					
WDX260D5S32N		26.0			133.0	213.0	153.0					
WDX270D5S32N		27.0			138.0	218.0	158.0					
WDX280D5S32N	WDX125012	28.0	32	41	143.0	223.0	163.0	70	CS50100	-	DBIT-T20	
WDX290D5S32N		29.0			149.0	230.0	170.0					
WDX300D5S32N		30.0			154.0	238.0	178.0					
WDX310D5S32N		31.0			159.0	243.0	183.0					
WDX320D5S32N	WDX125012	32.0	40	54	164.0	248.0	188.0	70	CS50100	-	DBIT-T20	
WDX330D5S40N		33.0			169.0	263.0	193.0					
WDX340D5S40N		34.0			174.0	268.0	198.0					
WDX350D5S40N		35.0			179.0	273.0	203.0					
WDX360D5S40N	WDX125012	36.0	40	54	184.0	278.0	208.0	70	CS50100	-	DBIT-T20	
WDX370D5S40N		37.0			190.0	290.0	220.0					
WDX380D5S40N		38.0			195.0	295.0	225.0					
WDX390D5S40N		39.0			200.0	300.0	230.0					
WDX400D5S40N		40.0			205.0	305.0	235.0					
WDX410D5S40N		41.0			210.0	310.0	240.0					
WDX420D5S40N		42.0			215.0	315.0	245.0					
WDX430D5S40N		43.0			220.0	320.0	250.0					
WDX440D5S40N	44.0	225.0	325.0	255.0								
WDX450D5S40N	45.0	230.0	330.0	260.0								